

Delaware General Health District

Dedicated to your health

NEWS RELEASE

WEEKLY INFLUENZA UPDATE

P.O. Box 570 1-3 W. Winter St. Delaware OH 43015
740-368-1700 FAX 740-368-1736 Web Site: www.delawarehealth.org

FOR IMMEDIATE RELEASE

For further information contact Jesse Carter, public information officer, at 740-203-2085.

DELAWARE, OH, October 30, 2009 –The Delaware General Health District will issue weekly updates to local news media throughout the upcoming flu season.

The Delaware General Health District administered its first H1N1 flu clinic on Monday, October 26th from 3:00 – 8:00 p.m. at Buckeye Valley High School, 901 Coover Road, Delaware. This clinic was for the Tier 1 priority group:

- Pregnant women
- Children ages 6 months to 18 years of age
- Parents or caregivers of children under the age of 6 months
- Health care providers giving direct patient care

At Monday's H1N1 clinic, 2,333 persons were given vaccine. Late evening there were no syringes for H1N1 shot doses for children under 3 years of age. Children over the age of 2 could obtain FluMist if there are no chronic health conditions. The parents of children not receiving the H1N1 shot or FluMist were advised to access the Delaware General Health District website at www.delawarehealth.org, call the information line at 740-203-2015 or call 211 for the next scheduled clinic.

The Delaware General Health District has exhausted all of its seasonal flu vaccine supplies.

Unfortunately, all remaining seasonal flu clinics have been cancelled.

LOCAL CASES: During the week of October 24 -October 30, there were six additional confirmed H1N1 cases reported to the Delaware General Health District. This brings the total of reported cases for Delaware County to 21. Four people were reported as being hospitalized due to influenza.

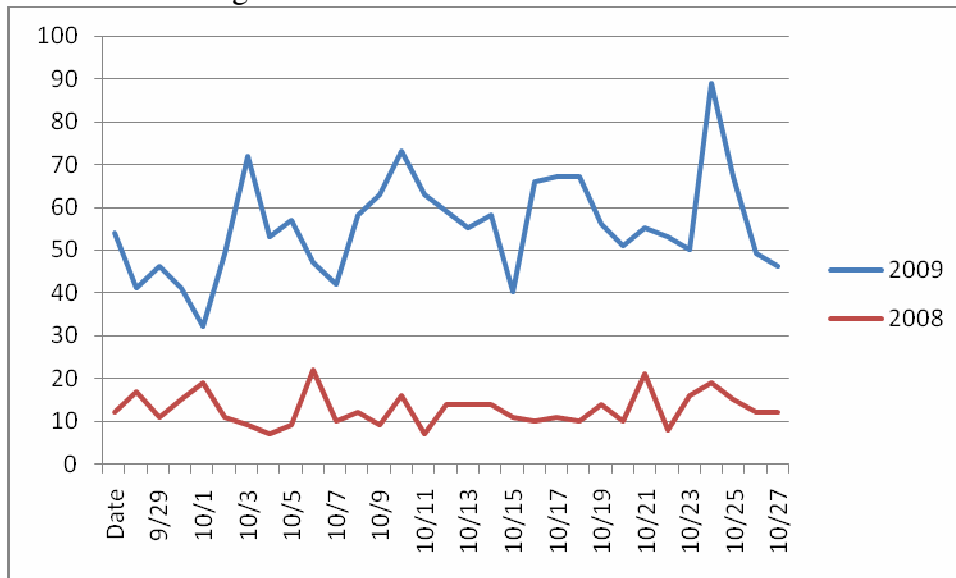
SCHOOLS: Some schools in Delaware County are reporting an increase in absenteeism among students. Schools are not reporting an increase above normal in absences for staff.

SENTINEL SITES AND OTHER SURVEILLANCE:

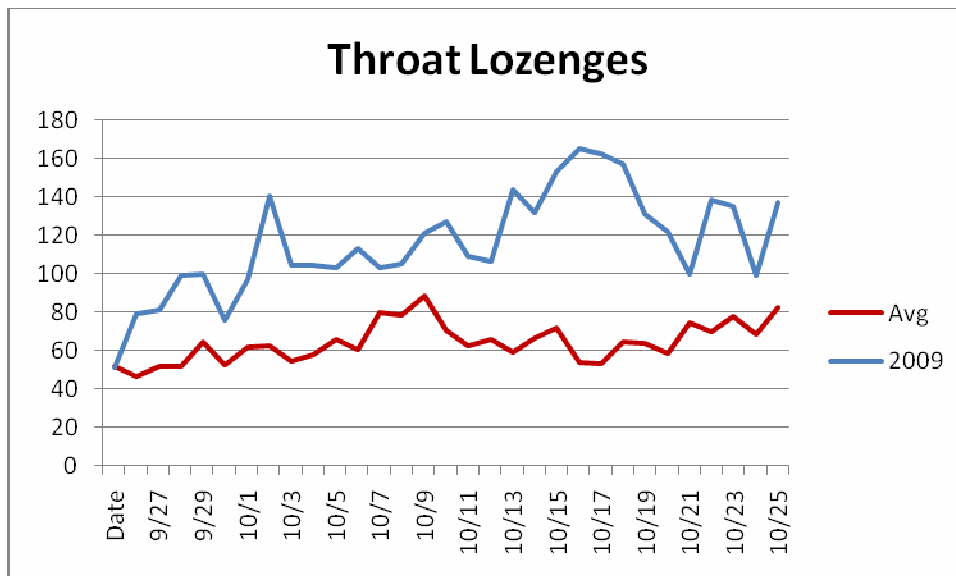
Influenza-Like Illness Surveillance

For the week of Oct 24-30

The number of people being seen by a healthcare provider due to Influenza Like Illness continues to be higher than normal.



*This data is collected from hospital emergency room and urgent care patient visits. When compared to the past three years sales data, over the counter sales of anti-fever pediatric medicine, thermometers and throat lozenges were all increased.



**This data is collected from select pharmacies who report their sales of over the counter medications

H₁N₁ FLU TESTING PROTOCOL: Since the symptoms and treatments are the same for seasonal flu and H1N1, many doctor offices and health care facilities are not testing for H1N1. Instead, if the patient tests positive for Influenza A, it is assumed it is H1N1. Nationwide Children's Hospital is not running H1N1 testing. They are considering all rapid flu tests that are positive for influenza A to be H1N1. For most otherwise healthy people, bed rest, drinking plenty of fluids and taking fever reducing medication is recommended for either seasonal flu or H1N1. Aspirin or medications containing aspirin are not recommended for children.

SEASONAL FLU SHOT CLINICS: All scheduled seasonal flu clinics have been cancelled. At this time there are no new seasonal vaccine shipments expected to arrive at the Delaware General Health District.

H₁N₁ FLU SHOT CLINICS: The next H1N1 clinic has not been scheduled at this time because more vaccine is needed to conduct a public clinic. Online pre-registration is highly recommended and is now available at http://www.delawarehealth.org/H1N1_Update.htm , or by going to <https://h1n1vaccine.odh.ohio.gov/>. Individuals can register all members of their family. When going to an H1N1 clinic, please bring the printed registration, making sure you have the identification number. Pre-registering does NOT guarantee you will receive vaccine at the clinic you attend. It does not constitute evidence of being in a priority group and it does not substitute as a consent form. Consent forms must be completed upon arrival. Only parents or someone with medical guardianship can sign the consent form. Notes from parents are not legally permissible. Pre-registering does help the Delaware General Health District, state of Ohio and the Ohio Department of Health track vaccine usage to better order vaccine and schedule clinics. It also allows e-mail contact from the Ohio Department of Health, when there are upcoming H1N1 flu clinics in your area when they are scheduled. If you do not have web access, you will still be able to receive the vaccine. We recommend people check our website at http://www.delawarehealth.org/H1N1_Update.htm or our information line at 740-203-2015 and by calling 211 for updates and for dates, times and locations of future H1N1 flu clinics.

SYMPTOMS: The symptoms of the H₁N₁ virus are similar to the symptoms of seasonal flu and include fever, cough, sore throat, body aches, headache, chills and fatigue. Diarrhea and vomiting have been reported by some people, mostly children. You should see a doctor or health care facility if you have difficulty breathing, shortness of breath, chest pain or pressure or vomiting that is severe or will not stop. In addition, for children, see a healthcare provider if the child is less responsive than usual or has seizures or convulsions.