

Delaware General Health District

Dedicated to your health

NEWS RELEASE

DELAWARE GENERAL HEALTH DISTRICT WEEKLY INFLUENZA UPDATE

P.O. Box 570 1-3 W. Winter St. Delaware OH 43015
740-368-1700 FAX 740-368-1736 Web Site: www.delawarehealth.org

FOR IMMEDIATE RELEASE

For further information contact Jesse Carter, public information officer, at 740-203-2085.

DELAWARE, OH, November 6, 2009 –The Delaware General Health District will issue weekly updates to local news media throughout the present flu season.

The Delaware General Health District conducted its second large-scale H1N1 flu clinic on Wednesday, Nov. 4, from 10 a.m. to 3 p.m. at the Delaware County Fairgrounds. This clinic served pregnant women, children aged 6 months through 18 years, parents and caregivers of infants under 6 months old, and health care workers in direct patient care. A total of 1,233 persons were given vaccine. Traffic and parking were not a problem, and waits were considerably shorter than at the previous clinic – less than one hour for most people.

NEXT H₁N₁ FLU IMMUNIZATION CLINIC: The next H1N1 immunization clinic will be Tuesday, Nov. 10, from 1-6 p.m. at the Delaware County Fairgrounds on the north side of the City of Delaware. All clients are asked to enter the U.S. 23 gate; other gates will be closed. The same Tier 1 priority groups as before will be eligible for this clinic:

- Pregnant women
- Children ages 6 months to 18 years of age
- Parents or caregivers of children under the age of 6 months
- Health care providers giving direct patient care (please bring ID to verify employment)

Online pre-registration is highly recommended and is now available at http://www.delawarehealth.org/H1N1_Update.htm , or by going to <https://h1n1vaccine.odh.ohio.gov/>. Individuals can register all members of their family. When going to an H1N1 clinic, please bring the printed registration, making sure you have the identification number. Pre-registering does **NOT** guarantee you will receive vaccine at the clinic

you attend. It does not constitute evidence of being in a priority group and it does not substitute as a consent form. Consent forms must be completed upon arrival at the clinic to receive the vaccine.

Only parents or someone with medical guardianship can sign the consent form for children to get the vaccine. Notes from parents are not legally permissible. Any parent or legal guardian wanting someone else (such as grandparents) to take children to the clinic **MUST** call 740-203-2040 prior to the day of the clinic and speak with a Delaware General Health District nurse. The nurse will advise how to proceed.

Pre-registering helps the Delaware General Health District, the State of Ohio and the Ohio Department of Health track vaccine usage to better order vaccine and schedule clinics. If you or a registered family member qualifies, registration also allows e-mail notification from the Ohio Department of Health about upcoming H1N1 flu clinics in your area. If you do not have web access, you will still be able to receive the vaccine. We recommend people check our website at http://www.delawarehealth.org/H1N1_Update.htm or our information line at 740-203-2015 or call 211 for updates and for dates, times and locations of future H1N1 flu clinics.

We encourage eligible persons who can take Flu Mist nasal spray vaccine to do so. Healthy persons aged 2-49 can take Flu Mist as long as they don't get two doses (seasonal or H1N1) within 28 days.

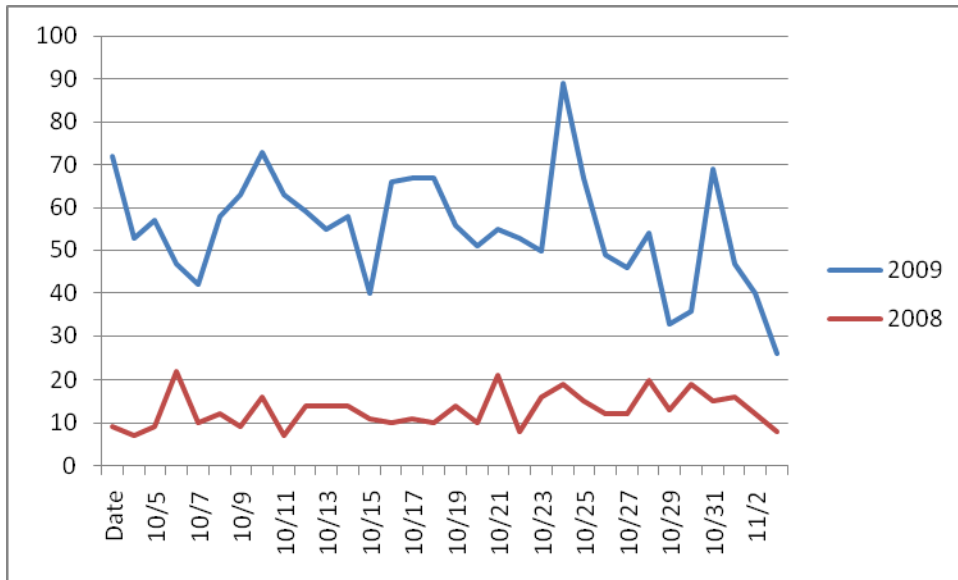
SEASONAL FLU SHOT CLINICS: The Delaware General Health District has exhausted all of its seasonal flu vaccine supplies. **All remaining seasonal flu clinics have been cancelled.**

LOCAL CASES: During the week of October 31 – November 6, six additional confirmed H1N1 cases were reported to the Delaware General Health District. This brings the total of reported confirmed cases for Delaware County to 29. Five of these cases were reported as being hospitalized due to influenza-like illness.

SENTINEL SITES AND OTHER SURVEILLANCE:

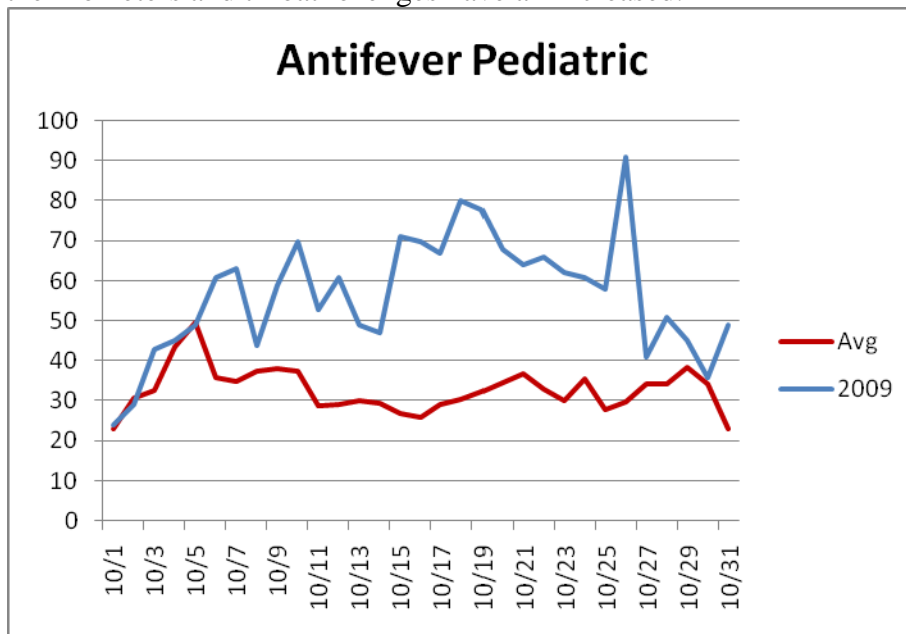
Absenteeism due to influenza-like illness reported at local preschools, daycares, schools, and workplaces decreased during the last week of October. At preschools and daycares, absenteeism was nearly 7 percent during the week that ended Oct. 23, but dropped below 4 percent the following week. In schools, absenteeism dropped from 11 percent to under 9 percent. Workplace absenteeism dropped slightly, and remained just above 4 percent.

The number of people being seen by healthcare providers due to influenza-like illness continues to be higher than normal.



*This data is collected from hospital emergency room and urgent care patient visits

When compared to the past three years, over-the-counter sales of anti-fever pediatric medicine, thermometers and throat lozenges have all increased.



**This data is collected from selected local pharmacies who report their sales of over-the-counter medications

SYMPTOMS: The symptoms of the H₁N₁ virus are similar to the symptoms of seasonal flu and include fever, cough, sore throat, body aches, headache, chills and fatigue. Diarrhea and vomiting have been reported by some people, mostly children. You should see a doctor or health care facility if you have difficulty breathing, shortness of breath, chest pain or pressure or

vomiting that is severe or will not stop. In addition, for children, see a healthcare provider if the child is less responsive than usual or has seizures or convulsions.

H₁N₁ FLU TESTING PROTOCOL: Since the symptoms and treatments are the same for seasonal flu and H1N1, many doctor offices and health care facilities are not testing for H1N1. Instead, if the patient tests positive for Influenza A, it is assumed it is H1N1. Nationwide Children's Hospital is not running H1N1 testing. They are considering all rapid flu tests that are positive for influenza A to be H1N1. For most otherwise healthy people, bed rest, drinking plenty of fluids and taking fever reducing medication is recommended for either seasonal flu or H1N1. Aspirin or medications containing aspirin are not recommended for children.