

Car Seat Manufacturers

BabyTrend Inc.
1-800-328-7363
www.babytrend.com

Britax Child Safety Inc.
1-888-427-4829
www.britaxusa.com

Chicco USA, Inc.
1-877-424-4226
www.chicco.com

Dorel Juvenile Group (DJG)
(Cosco, Eddie Bauer, Safety 1st)
1-800-544-1108
www.djgusa.com

Evenflo Company Inc.
1-800-233-5921
www.evenflo.com

Graco Children's Products
1-800-345-4109
www.gracobaby.com

Learning Curve/First Years
1-800-704-8697
www.learningcurve.com

Sunshine Kids
1-888-336-7909
www.skjp.com

Peg Perego U.S.A. Inc.
1-800-671-1701
www.perego.com

Summary of Ohio Child Restraint Law

Any child under 4 years old and any child under 40 pounds must be in a properly used car seat.

Kids 4 years old to either 8 years old or 4'9" must be in a booster seat.

Violators can receive fines of \$25 and more plus possible jail time for a second offense.

Free Car Seat Checks

More than 90 percent of the car seats that have been checked by the Delaware General Health District since 2001 had been installed incorrectly. Misuses may include loose harness straps securing the child to the car seat and loose seat belts securing the car seat to the vehicle.

If you would like to have your car seat inspected for free, please call the Delaware General Health District at (740) 368-1700.



Delaware General Health District
1-3 West Winter Street
Delaware, OH 43015
(740) 368-1700
www.delawarehealth.org/safe.htm

Delaware County Child Passenger Safety Program

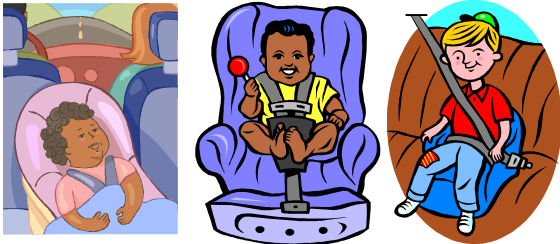


Which Seat To Use

Infants — Use a rear-facing car seat (infant carrier or convertible) with a 5-point harness in the back seat from birth to age 2 or until the child reaches the upper rear facing limit of the seat.

Toddlers — After a child can no longer rear face, use a forward-facing seat (convertible or combination) with a 5-point harness in the back seat until the child is at least age 4 and 40 pounds.

Young Kids — Use a belt positioning booster seat (high back or backless) with lap and shoulder belt in the back seat from about age four to at least age eight, or when the child is 4 feet 9 inches tall.



All children under 13 should ride in the back seat.

Be sure to read the instructions for your vehicle and your car seat before installing a car seat.

Older Kids — Use a lap and shoulder belt in the back seat starting at age 8 or when they reach 4 feet 9 inches.

When To Replace A Car Seat

- Expiration dates vary by manufacturer. Most seats have a 6 year life span.

- When the seat is recalled.

You can check to see if a car seat has been recalled by calling the car seat manufacturer and providing them with the name of the car seat, model number and date of manufacture (this information can be found on a sticker on the back or side of the car seat).



- When the seat is in a crash.

The National Highway Traffic Safety Administration recommends that car seats be replaced following a moderate or severe crash in order to ensure crash protection for child passengers. *This is a recommendation only — after any crash, contact the car seat manufacturer to find out what their replacement policy is.*



- When the history of the car seat is unknown.

If you have purchased a used car seat and do not know its history, you are putting your child at risk because the seat may have been damaged. *A car seat with an unknown history should never be used!*

Need A Car Seat?

The Delaware General Health District provides free car seats for parents in the WIC program or with a medical card. The Health District also provides car seats on a sliding-fee scale to county residents. To qualify for a seat you must:

1. Be a resident of Delaware County;
2. Be the child's legal guardian; and
3. Attend a child passenger safety class at the Health District.

There is a limit of one seat per child per development stage.

If you need a car seat or would like more information, please call the Health District at (740) 368-1700.