

**Rinse**

Food debris causes odors and bacteria. Contamination may cause materials to be rejected and landfilled.

**Flatten**

Save yourself and the recycling bins (or center) space by flattening cans and plastic. Please do not break glass bottles and jars.

**Lids**

Metal lids can be recycled. Separate them from the container. Plastic lids can be left on bottles going to the Rumpke drop offs. Loose lids are not accepted. Plastic lids are not accepted at Sims Recycling.

**Do I need to Separate? Sometimes!**

The Delaware County recycling drop off bins are now comingled. All recyclables can be put in the drop off bin. Check with your curbside or recycling center operator to find out how they would like items to be separated.



**Reuse**

Store and transport recyclables in reusable containers. Recyclers may not accept material in plastic bags. **Do not put plastic bags in the drop off bins.**

**Reduce**

If you can't recycle a package – look for an alternative product packaged in a recyclable container!

Item	Recycling Locations
Aluminum Cans	Price Marketing, Sims Recycling, Drop Off Bins
Aluminum Foil and Foil Items (Pie Pans, Etc.)	Sims Recycling, Drop Off Bins
Aseptic Packaging—Gable Top Cartons, Juice Boxes	Drop Off Bins
Books – Hardcover and Paperback	Price Marketing, Sims Recycling (loading dock)
Corrugated Cardboard (Heavy Type w/ Ridges) <i>Remove Contaminants (Styrofoam &amp; Plastics)</i>	Price Marketing, Sims Recycling, Drop Off Bins
Dry Cleaning Bags & Wire Hangers (For Reuse)	Swan Cleaners
Egg Cartons (Cardboard type <b>ONLY</b> )	Price Marketing, Drop Off Bins
Electronics - Computer CPUs, keyboard, printers, cellphones, stereos, receivers, home phones, televisions & monitors	Sims Recycling, Best Buy stores, Ohio Drop Off at Ohio Mulch <a href="http://www.ohiodropoff.com">www.ohiodropoff.com</a> . <i>Fee for monitors at Sims &amp; Ohio Mulch</i>
Glass – Food and Drink Containers <b>ONLY</b> <b>Clear, Brown, Amber, Green, &amp; Blue - Remove Lids</b>	Sims Recycling, Drop Off Bins
Newspaper, Magazines & Catalogs	Price Marketing, Sims Recycling, Drop Off Bins
Paper – White Office/Mixed Office/Junk Mail & Computer (Green Lines), Grocery Sacks (White & Brown)	Price Marketing, Sims Recycling, Drop Off Bins
Paperboard/Boxboard— Cereal Boxes, Etc. <i>Remove Plastic Liners/Windows &amp; Flatten</i>	Price Marketing, Sims Recycling, Drop Off Bins
Phone Books	Price Marketing, Sims Recycling, Drop Off Bins
Plastic Bags	Buehlers, Kroger, Wal-Mart, Kohls
Plastic – Bubble Wrap (For reuse)	Pak Mail, The UPS Store
Plastic Containers – #1 & #2 Narrow Necked Bottles / Jugs	Sims Recycling, Drop Off Bins
Plastic Containers—#3 to # 7 Narrow Necked Bottles /Jugs	Drop Off Bins
Plastic Six Pack Rings	Columbus Zoo - My House at Habitat Hollow exhibit
Polystyrene – Packing Peanuts <b>Only</b>	Pak Mail, Post Pack and Ship, The UPS Store
Scrap Metals	Sims Recycling - <i>Call For More Information</i>
Steel and Bimetal Cans	Sims Recycling, Drop Off Bins
Televisions	Best Buy-Free (tube style 32” or less; 60” or less flat panel); Ohio Drop Off at Ohio Mulch Locations-Fee (614) 478-0808 or <a href="http://www.ohiodropoff.com">www.ohiodropoff.com</a> ; Siam Reclaim Technologies-Fee (614) 863-9999.

Information in this brochure was current at the time of printing. All information is subject to change.

Updated 1/2012.

Funding for this brochure was provided by:

**DKMM SOLID WASTE DISTRICT**

222 W.Center Street, Marion, Ohio 43302  
(740) 223-4150 \* (740) 223-4155 – Fax

**Special Wastes**

**Appliances** can be taken to Sims Recycling. Sims will pay for appliances. Sims doesn't accept appliances whose Freon lines have been tampered with. The Delaware County Solid Waste Transfer Station accepts non Freon appliances at no charge. Call *Keep Delaware County Beautiful* to ask about our spring drop off & Senior Citizen Appliance Pick Up! Call Buck & Rob's Hauling at 614-778-9384 for year round appliance pick ups.

**Automobiles** may be accepted by many charities.

**Batteries** (lead acid) should be traded in at the retailer or taken to the Transfer Station or Sims Recycling. Rechargeables can be taken to Batteries Plus (614) 396-5490 or Home Depot Stores. Batteries Plus accepts household (alkaline) batteries. Tape terminals & place in airtight plastic bag for safety.

**Cell Phones** and peripherals may be taken to the Delaware General Health District, Columbus Zoo, Sims Recycling, Delaware County Victims Services or Sheriff's Office.

**Electronics** are accepted at Sims Recycling or Best Buy. See table. T.V.s usually accepted for a fee.

**Gasoline** can be taken to Central Ohio Oil, 795 Marion Rd. in Columbus, 614-443-9728.

**Household Hazardous Waste Drop Off** events are held in the District's 4 counties each year. Paint is not accepted. To learn how to dry paint or find out about drop offs, call Keep Delaware County Beautiful at 740-368-1700. Call EEI at 614-294-1300 for pay to dispose program.

**Light Bulbs** Small numbers of Fluorescents tubes or compact **ONLY** can be taken to Home Depot, Lowes, & Menards.

**Motor Oil** can be taken to TSC, Auto Zone, Wal-Mart Tire & Lube in Delaware or Lewis Center or ask your service station.

**Tires** should be traded in when new tires are purchased. Take tires to the Delaware County Solid Waste Transfer Station (740-369-7700) or Liberty Tire Service of Ohio (614-871-8097) for a fee. The DKMM Solid Waste District accepts tires at its Household Hazardous Waste drop offs each fall.

**Vegetable Oils** can be recycled. Call MB Katter at (740) 362-3000.

**Yard Waste** can be taken to Price Farms Organics, (740-362-4838), 4838 Warrensburg Rd. (residents of the DKMM Solid Waste District may bring yard trimmings at no charge), Mulch 1st ([www.mulch1st.com](http://www.mulch1st.com)) or Ohio Mulch ([www.ohiomulch.com](http://www.ohiomulch.com)) .

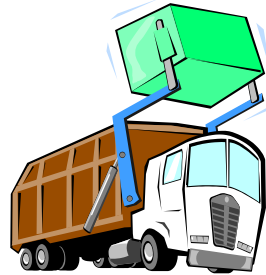
## Curbside Recycling



Most Delaware County residents can recycle at curbside on trash collection day. Curbside recycling service is available in the City of Delaware, Powell, Ashley, and Galena. Curbside recycling is also available to Genoa, Kingston, Liberty, and Orange townships. Residents of these communities are encouraged to get curbside recycling bins by contacting their trash hauler. Fees apply in some areas.

### Recycling Drop Off Locations (if curbside is not available) Service contract with Rumpke

- ◆ Ashley/Oxford Twp. - Buckeye Valley East Elementary 522 East High St., Ashley
- ◆ Berlin Township – Arrowhead Elementary 2385 Hollenback Rd., Lewis Center
- ◆ Brown Twp.– next to ball field & church 5563 St Rt 521 Kilbourne
- ◆ Genoa Twp. – Maintenance Garage 7049 Big Walnut Rd., Galena
- ◆ Harlem Twp. – Maintenance Garage 605 Water St., Center Village
- ◆ Kingston Twp. – Maintenance Office 5755 Blue Church Rd., Sunbury
- ◆ Liberty Twp. – Wyandot Run Elementary 2800 Carriage Rd., Powell
- ◆ Liberty Twp. – Olentangy Liberty High School 3584 Home Rd., Powell
- ◆ Orange Twp. – Olentangy High School 675 Lewis Center Rd., Lewis Center
- ◆ Porter Twp. – Township Hall 12826 McKay St., Olive Green
- ◆ Radnor – Buckeye Valley North Elementary 4230 St. Rt. 203, Radnor
- ◆ Scioto Twp.– Scioto Township Hall 3737 Ostrander Rd., Ostrander
- ◆ Sunbury – Vineyard Church 1001 W. Cherry St., Sunbury
- ◆ Trenton Twp. – Township Hall 15495 Hartford Rd. , Sunbury
- ◆ Troy Twp. – Troy Township Hall 4293 US Rt. 23 North, Delaware



**Please-Drop offs are for recyclables only. Do not deposit trash, plastic bags, or other non recyclable materials.**

### Other Recycling Drop Off Opportunities . . .

#### Sims Recycling

65 London Rd., Delaware, (740) 363-9192  
Monday – Friday - 8 a.m. to 4:30 p.m.  
Saturday from 8 a.m. to Noon  
Hours subject to change  
See table on reverse for accepted items.

To locate **ABITIBI** paper drop off locations, visit  
[www.delawarehealth.org](http://www.delawarehealth.org) or [www.paperretriever.com](http://www.paperretriever.com).

#### Price Marketing Management

4839 Warrensburg Rd., Delaware, (740) 369-5504  
24 Hour – Paper and Aluminum Items Only

#### Delaware County Transfer Station

888 US Rt. 42 North, Delaware, (740) 369-7700  
Monday – Friday – 8 a.m. to 4:30 p.m.  
Saturday – 8 a.m. to 12 p.m.  
Accepts garbage, non-freon appliances, & tires.  
See reverse for details.

## Charities & Resale Stores

AMVETS – (614) 443-9400

Usable donations. Limited pick up area

Better Clothes and Bargains – (614) 889-1520

9226 Dublin Rd., Shawnee Hills

Used and new items.

Common Ground Free Store - 740-369-3733

[www.commongroundfreestore.com](http://www.commongroundfreestore.com)

Accepts donations Saturdays from 10 am to 2 pm.

Delaware Creative Housing - 368-5803 x2 Ted Hoff

Accepts furniture and adaptive equipment such as wheelchairs and canes.



Goodwill – (740) 369-6021

171 S. Sandusky, Delaware

Usable donations. Call for details.

Goodwill– (740) 362-5541

1135B Columbus Pike, Delaware

Usable donations. Call for details.

Material Assistance Providers- (614) 853-9355

[www.mapfurniturebank.org](http://www.mapfurniturebank.org) Gently used furniture & more. Call for details. Limited pick up area.

Restore – (740) 369-4505

305 Curtis St., Delaware

New and used, good condition

building materials, latex paint

and appliances donations. Call for details.



Salvation Army - (614) 221-4269

Gently used furniture & more. Call for truck pickup.

(Drop offs in Delaware no longer available).



Toujours – (740) 363-2193

8 N. Sandusky St., Delaware

Resale clothing on consignment.

Volunteers of America

(614) 272-2363

Usable items in good condition.

Limited pick up area.

Be responsible!

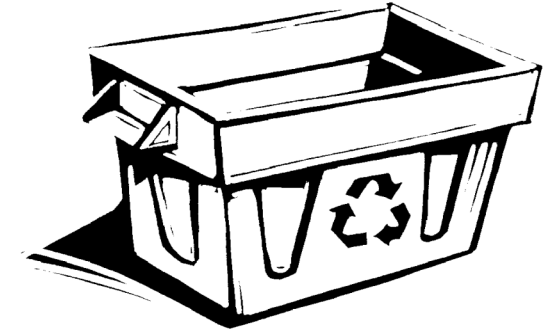
Do **NOT** dump unusable items on these agencies.

Dispose of your own junk the right way!

**Delaware Co. Litter Hotline: 1-866-383-1024**

The Delaware General Health District operates in accordance with Title VI of the Civil Rights Act of 1964.

# Delaware County Community Recycling Program



## Where to Recycle in Delaware County

Curbside Recycling  
is now available in  
Liberty Township!

### Keep Delaware County Beautiful

Delaware General Health District

P.O. Box 570

1 W. Winter Street

Delaware, OH 43015-0570

(740) 368-1700 ext. 2076

E-mail: [jway-young@delawarehealth.org](mailto:jway-young@delawarehealth.org)  
Home Page: [www.delawarehealth.org](http://www.delawarehealth.org)

