

# **Delaware General Health District**

## ***Dedicated to your health***

# NEWS RELEASE

## WEEKLY INFLUENZA UPDATE

P.O. Box 570            1-3 W. Winter St.      Delaware OH 43015  
740-368-1700          FAX 740-368-1736      Web Site: [www.delawarehealth.org](http://www.delawarehealth.org)

### **FOR IMMEDIATE RELEASE**

For further information contact Jesse Carter, public information officer, at 740-203-2085.

**DELAWARE, OH, October 16, 2009** –The Delaware General Health District will issue weekly updates to local news media throughout the upcoming flu season. On October 9<sup>th</sup> the Delaware General Health District received its first shipment of Antiviral medication from the Ohio Department of Health. This is being distributed to local health care facilities as needs are identified. The Delaware General Health District has also received its first shipments of H1N1 vaccine. This is being administered to EMS and Health Care Providers who have direct patient contact.

**LOCAL CASES:** During the week of October 10 -October 16, the number of people being seen by a healthcare provider due to Influenza Like Illness continues to be higher than normal for this time of the year and as compared to 2008.

This week there were two additional confirmed H1N1 cases reported to us bringing the total confirmed H1N1 positive cases to 11 throughout Delaware County. One of these two new cases is a 24 year old pregnant female, and the other is a 14 year old male. We also had four people reported as being hospitalized due to influenza.

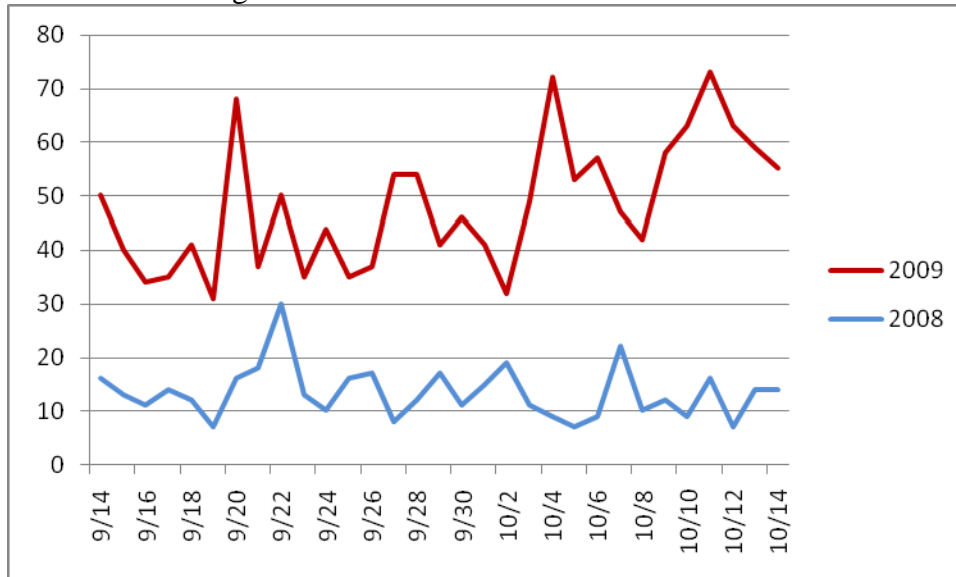
**SCHOOLS:** Some schools in Delaware County are reporting an increase in absenteeism among students. Schools are not reporting an increase above normal in absences for staff.

**SENTINEL SITES AND OTHER SURVEILLANCE:** Compared to the three year baseline, there has been an increase in the number of sales for anti-fever medicines for children, thermometers and throat lozenges.

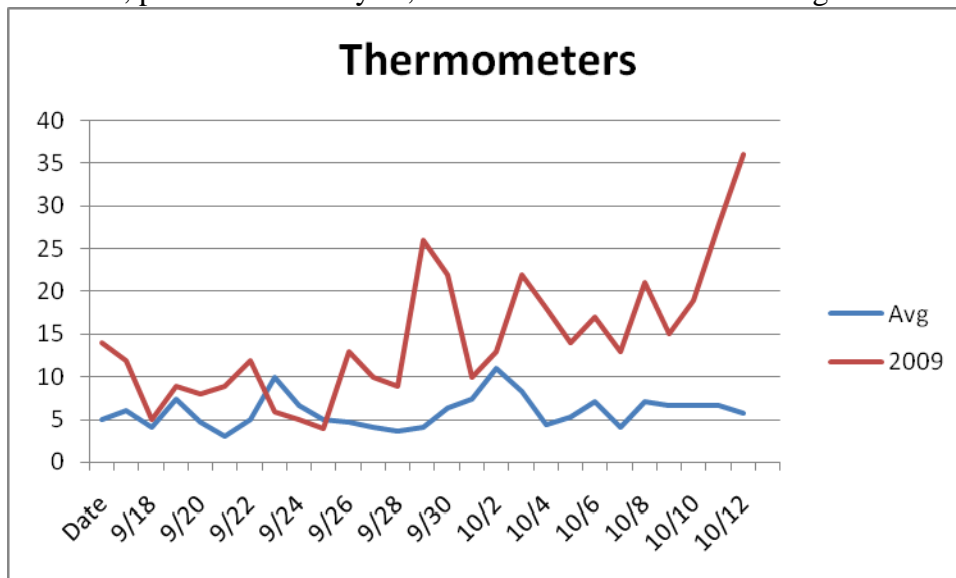
## Influenza-Like Illness Surveillance

For the week of Oct 10-16

The number of people being seen by a healthcare provider due to Influenza Like Illness continues to be higher than normal.



\*This data is collected from hospital emergency room and urgent care patient visits. When compared to the past three years sales data, over the counter sales of antifever pediatric medicine, pediatric electrolytes, thermometers and throat lozenges were all increased.



\*\*This data is collected from select pharmacies who report their sales of over the counter medications

**H<sub>1</sub>N<sub>1</sub> FLU TESTING PROTOCOL:** Since the symptoms and treatments are the same for seasonal flu and H1N1, many doctor offices and health care facilities are not testing for H1N1. Instead, if the patient tests positive for Influenza A, it is assumed it is H1N1. For most otherwise healthy people, bed rest, drinking plenty of fluids and taking fever reducing

medication is recommended for either seasonal flu or H1N1. Aspirin or medications containing aspirin are not recommended for children.

**SEASONAL FLU SHOT CLINICS:** The Health District's seasonal flu shot clinics for the upcoming week are:

- Monday, October 19<sup>th</sup> from 1:30 – 3:30 P.M. at the Georgetown Village Retirement Center, 100 Georgetown Drive, Delaware
- Tuesday, October 20<sup>th</sup> from 1:00 – 3:00 p.m. at the Center for Older Adults, 800 Cheshire Road, Delaware
- Thursday, Oct. 22<sup>nd</sup> from 11:00 – 12:30 at Scioto Township Hall/Ostrander Senior Citizens, 3737 Ostrander Road, Ostrander

The Delaware General Health District has plenty of seasonal flu vaccine at this time. Over 400 senior citizens attended the first fall clinic held at the Center for Older Adults on October 14<sup>th</sup>.

**H<sub>1</sub>N<sub>1</sub> FLU SHOT CLINICS:** There are no H1N1 flu for the public clinics scheduled at this time. The Delaware General Health District will offer H<sub>1</sub>N<sub>1</sub> immunizations once additional vaccine is received. The priority groups are as follows:

- Health care and emergency services personnel with direct patient contact
- Pregnant women
- People who live with or care for children younger than 6 months of age
- Children 6 months and older
- Young adults through age 24

Vaccination of Delaware County EMT's and other medical providers has begun, some of whom will be assisting with future H1N1 clinics.

Details on how to get the H<sub>1</sub>N<sub>1</sub>flu vaccine will be announced later. Online pre-registration is highly recommended and is now available at <https://h1n1vaccine.odh.ohio.gov/>. Individuals can register all members of their family. When going to an H1N1 clinic, please bring the printed registration, making sure you have the identification number. If you do not have web access, you will still be able to receive the vaccine. We recommend people check our website at [www.delawarehealth.org](http://www.delawarehealth.org) and information line at 740-203-2015 for updates.

**SYMPTOMS:** The symptoms of the H<sub>1</sub>N<sub>1</sub> virus are similar to the symptoms of seasonal flu and include fever, cough, sore throat, body aches, headache, chills and fatigue. Diarrhea and vomiting have been reported by some people, mostly children. You should see a doctor or health care facility if you have difficulty breathing, shortness of breath, chest pain or pressure or

vomiting that is severe or will not stop. In addition, for children, see a healthcare provider if the child is less responsive than usual or has seizures or convulsions.

**-- 30 --**