

Delaware General Health District

Dedicated to your health

NEWS RELEASE

DELAWARE GENERAL HEALTH DISTRICT WEEKLY INFLUENZA UPDATE

P.O. Box 570 1-3 W. Winter St. Delaware OH 43015
740-368-1700 FAX 740-368-1736 Web Site: www.delawarehealth.org

FOR IMMEDIATE RELEASE

For further information contact Jesse Carter, public information officer, at 740-203-2085.

DELAWARE, OH, November 13, 2009 –The Delaware General Health District will issue weekly updates to local news media throughout the present flu season.

Additional vaccine received this week has enabled us to plan several more H1N1 immunization clinics. We have announced two of them:

- Sunday, Nov. 15, from noon to 4 p.m. at Olentangy Liberty High School, 3584 Home Road, Powell. That is for children aged 6 months through 18 years; pregnant women; parents of infants less than 6 months old; and health care providers providing direct patient care (please bring ID to confirm employment). We expect heavy traffic at this clinic. If the turnout surpasses our service capacity, we will direct new arrivals to subsequent clinics.
- Thursday, Nov. 19, from 9 a.m. to 4 p.m. in the basement of the Delaware General Health District offices at 1 W. Winter St. in downtown Delaware. That is for pregnant women and parents of infants less than 6 months old only; children will not be served that day.

Plans for immunization clinics we expect to announce in the near future probably shall include:

- A clinic solely offering Flu Mist nasal spray H1N1 vaccine, which can be taken by healthy persons aged 2-49 except for breastfeeding mothers and persons allergic to eggs or gelatin.

- More large-scale clinics at the Delaware County Fairgrounds. Our large-scale clinics at the fairgrounds on Nov. 4 and 10 served a total of 3,005 people with no traffic problems and average wait times under one hour.
- Continued efforts to help people avoid long waits in line, including the live webcam view of the lines at each clinic.

The Health District also anticipates broadening eligibility for the H1N1 vaccine in the near future to include adults up to age 64 with chronic health conditions.

The Health District administration wants to thank the Delaware County Sheriff's Office, Delaware City Police, and other local law enforcement agencies for their help in planning the large-scale H1N1 clinics. Law officers have been instrumental in planning all DGHD H1N1 immunization clinics and managing traffic flow, and have worked diligently to reduce waiting times and ensure clients' safety.

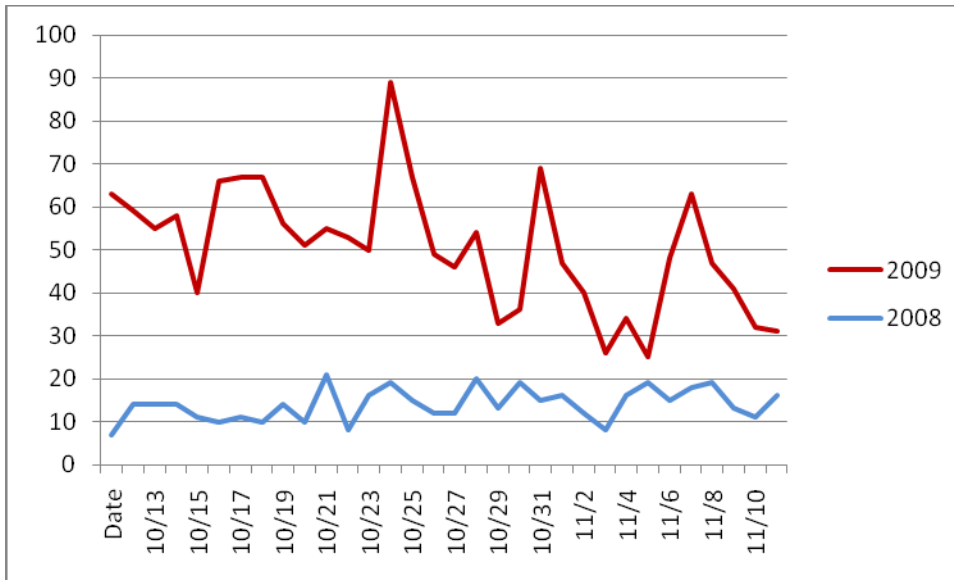
The Delaware General Health District has exhausted all of its seasonal flu vaccine supplies. **Unfortunately, all remaining seasonal flu clinics have been cancelled.**

LOCAL CASES: During the week of November 7-13, one new confirmed case of H1N1 flu was reported to the Delaware General Health District. That was a 37-year-old woman hospitalized for a week. This brings the total of reported cases for Delaware County to 29.

SCHOOLS: No unusual patterns of absences were noted in local schools last week. Absenteeism due to influenza-like illnesses remains higher than normal for this time of year among local preschoolers, K-12 students, and school staff members.

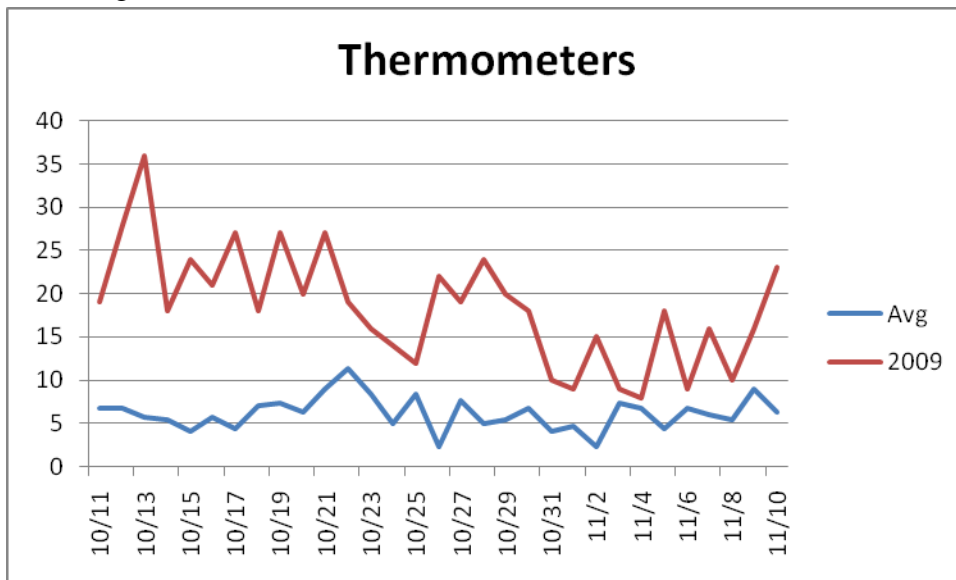
PUBLIC EDUCATION EFFORTS: The Health District has placed messages on billboards and school bus shelters at various locations around Delaware County encouraging everyone to stay home if they are sick and to take other steps to help prevent the spread of flu.

SENTINEL SITES AND OTHER SURVEILLANCE: The number of people being seen by a healthcare provider due to Influenza Like Illness continues to be higher than normal.



**This data is collected from hospital emergency room and urgent care patient visits.*

When compared to the past three years sales data, over the counter sales of thermometers and throat lozenges were increased.



***This data is collected from select pharmacies who report their sales of over the counter medications*

For the latest information on Delaware General Health District H1N1 flu immunization clinics, log on to www.delawarehealth.org or phone 740-203-2015 or 2-1-1.