

# 2017 Plumbing Inspection News



## Check us out online!

**Online schedules:** Plumbing inspection arrival times are listed at DelawareHealth.org located on the left side under inspections. It is important to note that the times listed on this schedule are estimations. Plumbing inspectors may arrive as early as one hour before or one hour later than posted times. Scheduled times are generally posted to the website between 8:00-8:30AM the day of inspection. These times are subject to change due to cancellations.

**Required Forms:** Under the Environmental Health & Preparedness tab of DelawareHealth.org, you can access the Plumbing section that includes the 2017 Plumbing Registration, License Bond, Plumbing Permit and Medical Gas Permit.

**Making payments:** Under Featured Links on the right side of the home page click on Environmental Health Online Payments, click on plumbing to pay any fees online.

If you prefer not to pay online, we accept credit card payments over the phone. We also accept payments through the mail or in person at the Health District.

**State of Ohio Plumbing Codes:** On the plumbing portion of our website we also give you a direct link to the State of Ohio Code requirements.

## Avoid the Red Tags

One of the most frequent reasons the Health District plumbing unit issues red tags is for failure to post building and plumbing permits at the job site.

Since July 1, 2012 the Health District plumbing unit, Delaware County Code Compliance and Delaware City Building Department have required sign off cards to be posted on site for all plumbing inspections.

**Please post sign off cards to avoid re-inspection fees.**



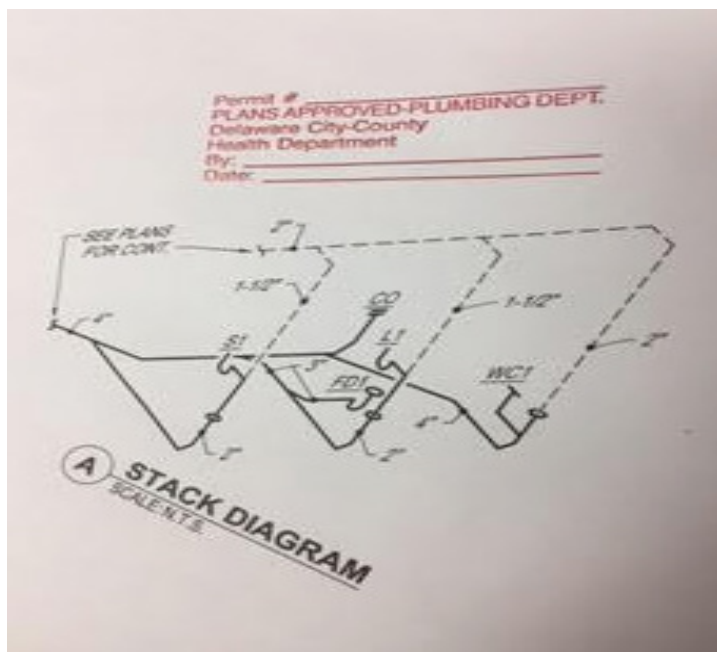
# Approved Plans

Before the Health District will issue a plumbing permit for all commercial jobs, a blue print or isometric drawing must be submitted, reviewed and approved.

Once the plans are approved the permit will be issued. The approved drawings and permit must be posted at the jobsite.

During the inspection plumbing inspectors will check for compliance with the Ohio Plumbing Code and also to see that the approved plan has been followed.

Failure to have the approved plans posted on the job site at the time of inspection will result in a red tag.



# Backflow Preventers Require Permits

Just a reminder that our inspectors are still finding unpermitted backflow preventer installations on irrigation systems.

Installers must be state certified plumbing contractors registered with the Delaware General Health District. Installers must first obtain a plumbing permit. Then after the installation and prior to the inspection, these devices are to be tested by state certified backflow technicians. A copy of the results attached to the plumbing permit must be present on site.

# Water Driven Sump Pumps

We are finding that a lot of water driven sump pumps are being installed incorrectly. Per the water suppliers, a high hazard back flow device is required on the water supply to the pump. The pump manufacturer requires the drain to discharge separately to the outside.

# 2017 DGHD Closures

- Monday February 20 - President's Day
- Monday May 29 - Memorial Day
- Tuesday July 4 - Independence Day
- Monday September 4 - Labor Day
- Thursday September 21 - Little Brown Jug Day (Offices close at 12pm)
- Monday October 9 - Columbus Day
- Friday November 10 - Veteran's Day
- Thursday November 23 - Thanksgiving
- Friday November 24 - Day after Thanksgiving
- Friday December 22 - Christmas Eve (Offices close at 12pm)
- Monday December 25 - Christmas
- Friday December 29 - New Year's Eve Offices close at 12pm
- Monday January 1, 2018 - New Year's Day



Plumbing questions can be directed to:  
Dwight Brill at (740) 203-2065  
Darrin Dawson at (740) 203-2060